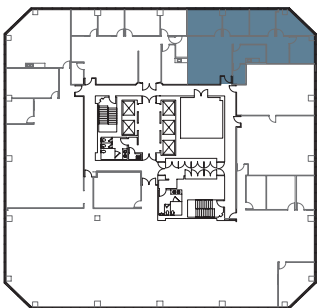
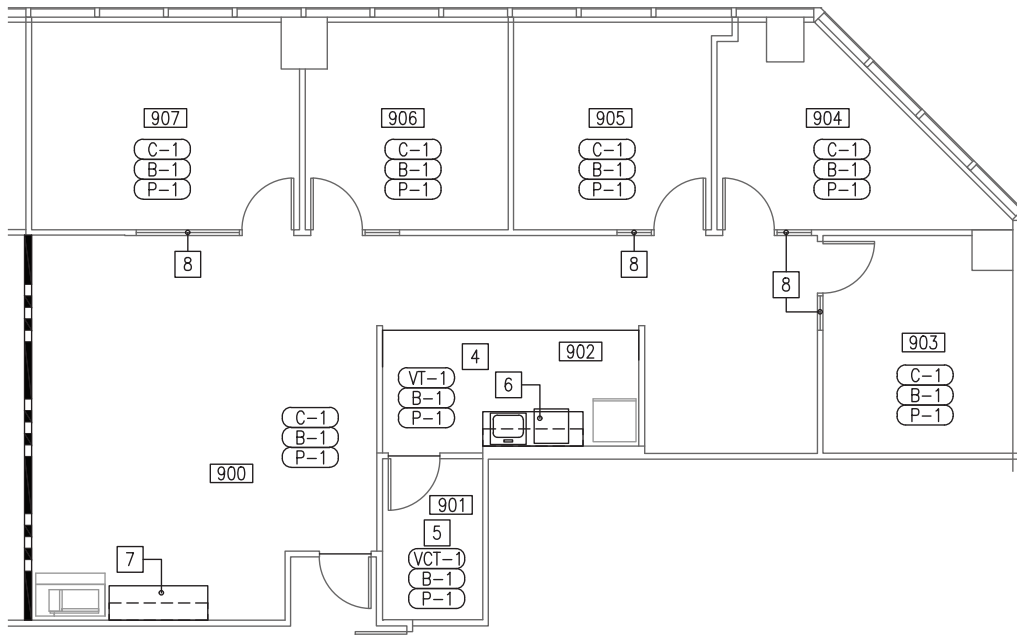


1 COLUMBIA PLACE

SUITE 925

401 WEST A STREET SAN DIEGO CA 92101
 LANDMARK DOWNTOWN
 CLASS A OFFICE BUILDING
 27 STORIES TOTALING 556,750 SF



Owned & professionally managed by:



EMMES Leasing
 emmesleasing@eamc.com
 619.515.3400

SUITE	925
RSF	2,045
VIEW	Northeast
STATUS	Vacant
DESCRIPTION	New Spec Suites, Corner suite with 5 private offices, reception area and break room