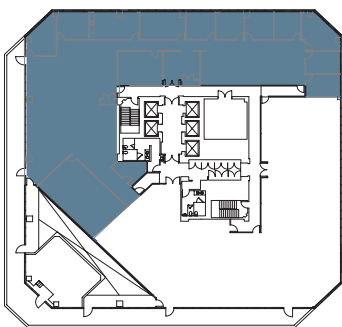
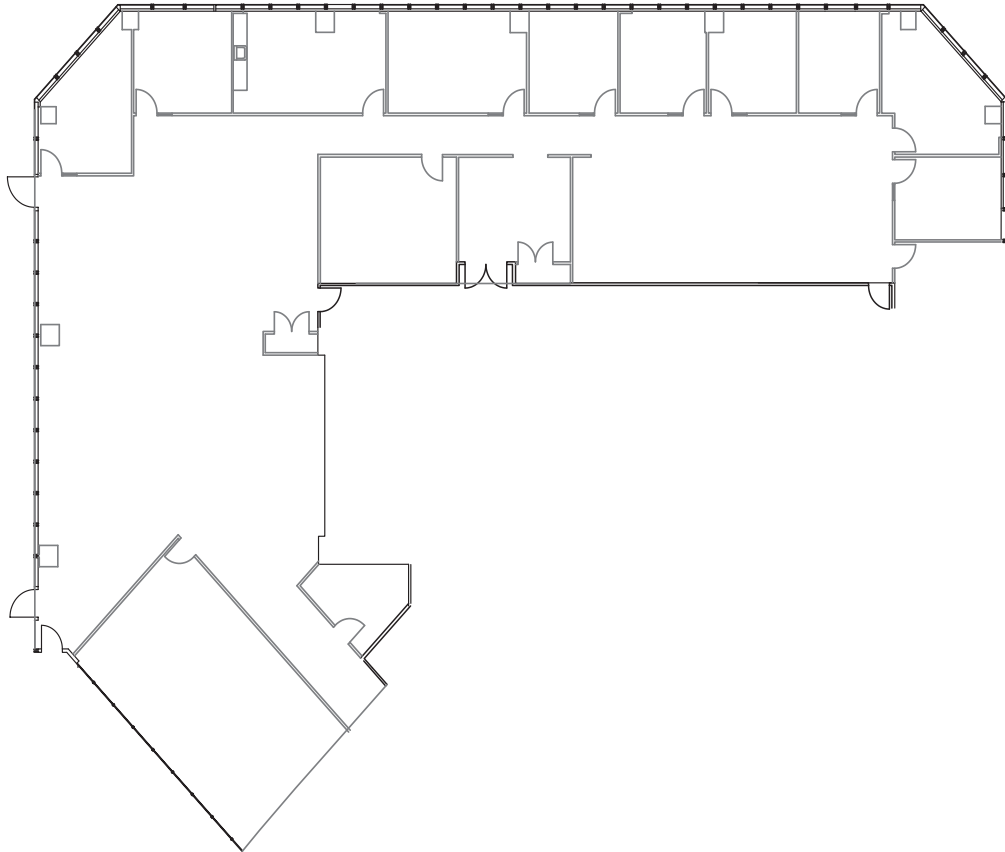


1 COLUMBIA PLACE

SUITE 700

401 WEST A STREET SAN DIEGO CA 92101
LANDMARK DOWNTOWN
CLASS A OFFICE BUILDING
27 STORIES TOTALING 556,750 SF



Owned & professionally managed by:



EMMES Leasing
emmesleasing@eamc.com
619.515.3400

SUITE	700
RSF	9,380
VIEW	Northwest
STATUS	4/2017
DESCRIPTION	Double door entry. Several window line offices.