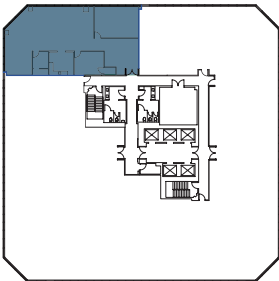
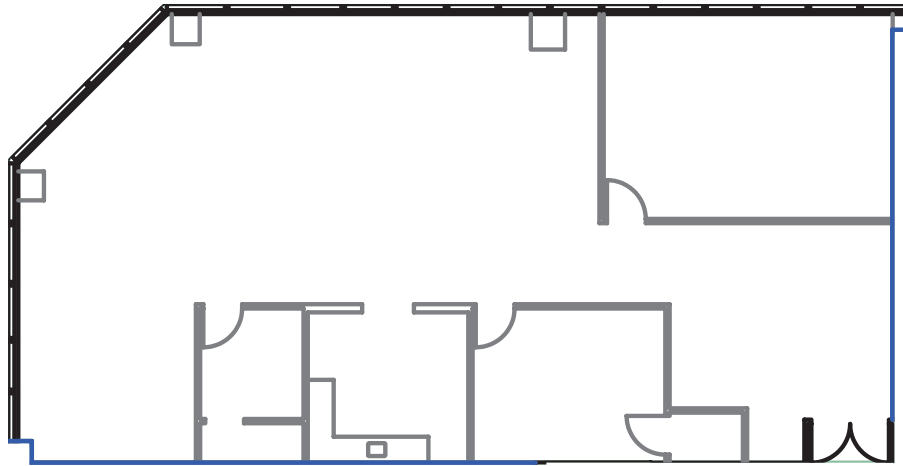


1 COLUMBIA PLACE

SUITE 1810

401 WEST A STREET SAN DIEGO CA 92101
LANDMARK DOWNTOWN
CLASS A OFFICE BUILDING
27 STORIES TOTALING 556,750 SF



Owned & professionally managed by:



EMMES Leasing
emmesleasing@eamc.com
619.515.3400

SUITE	1810
RSF	2,866
VIEW	North
STATUS	7/2017
DESCRIPTION	Big view open space! Glass conference room!