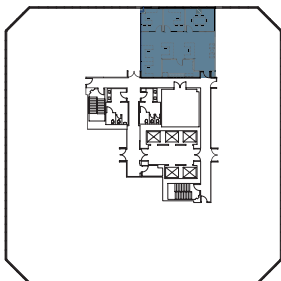
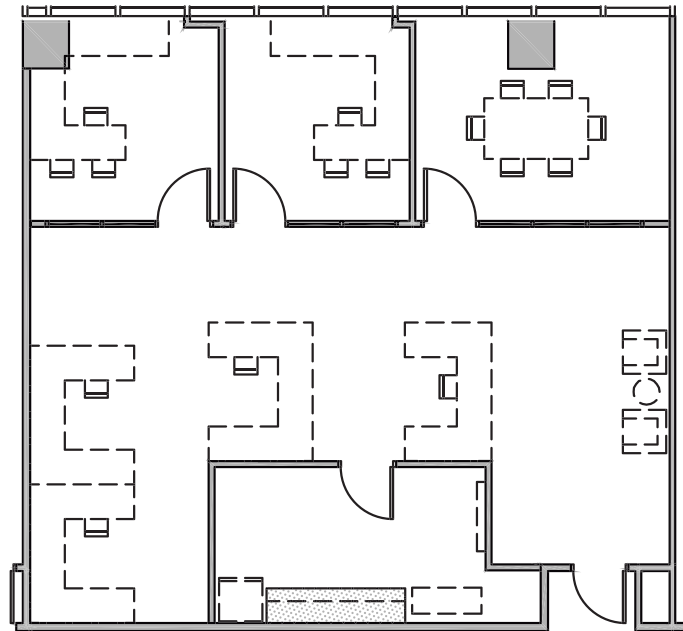


1 COLUMBIA PLACE

SUITE 1820

401 WEST A STREET SAN DIEGO CA 92101
 LANDMARK DOWNTOWN
 CLASS A OFFICE BUILDING
 27 STORIES TOTALING 556,750 SF



Owned & professionally managed by:



EMMES Leasing
 emmesleasing@eamc.com
 619.515.3400

SUITE	1820
RSF	1,602
VIEW	North
STATUS	7/2017
DESCRIPTION	Great Views! 3 exterior offices and glass conference room.