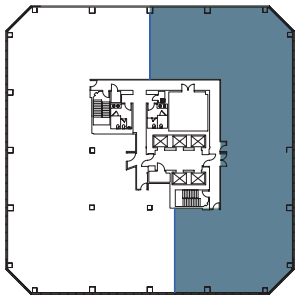
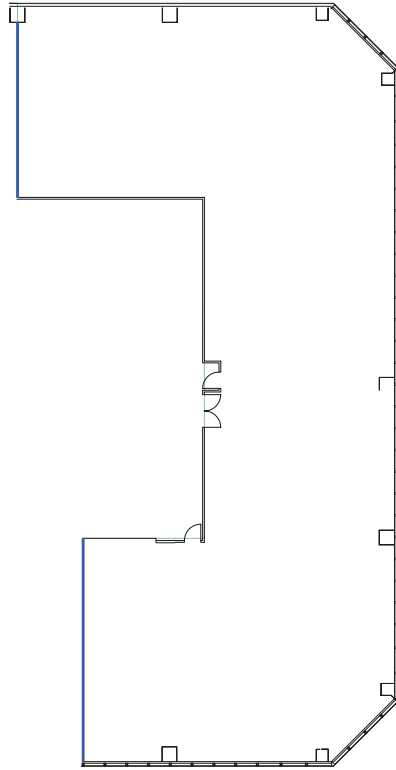


1 COLUMBIA PLACE

SUITE 1950

401 WEST A STREET SAN DIEGO CA 92101
 LANDMARK DOWNTOWN
 CLASS A OFFICE BUILDING
 27 STORIES TOTALING 556,750 SF



Owned & professionally managed by:



EMMES Leasing
 emmesleasing@eamc.com
 619.515.3400

SUITE	1950
RSF	8,473
VIEW	North, South, and East
STATUS	Vacant
DESCRIPTION	Expansive views with double door entry on newly renovated floor! Space plan today!