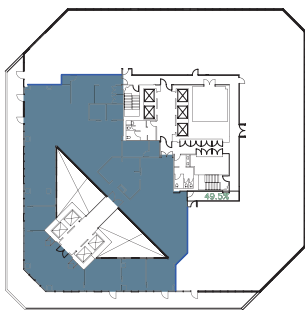
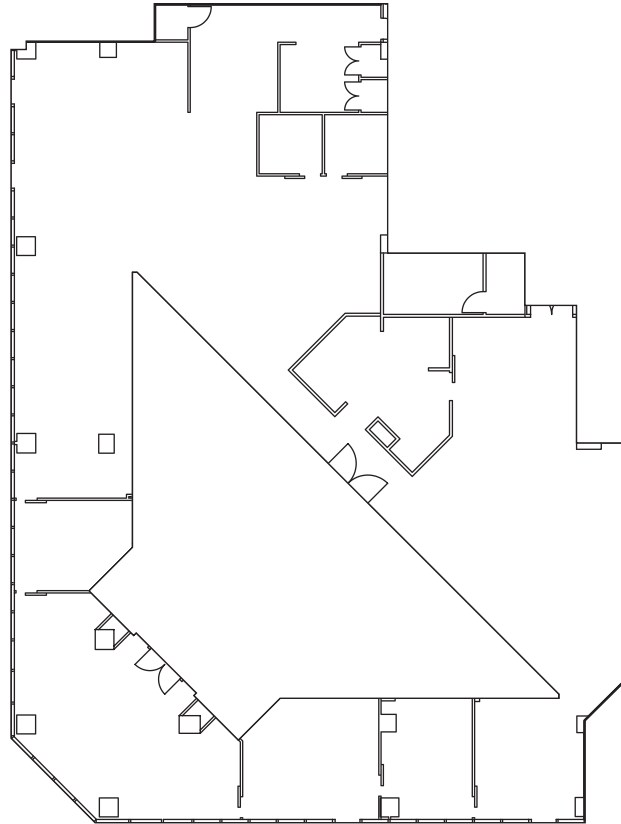


1 COLUMBIA PLACE

SUITE 625

401 WEST A STREET SAN DIEGO CA 92101
 LANDMARK DOWNTOWN
 CLASS A OFFICE BUILDING
 27 STORIES TOTALING 556,750 SF



Owned & professionally managed by:



EMMES Leasing
 emmesleasing@eamc.com
 619.515.3400

SUITE	625
RSF	8,431
VIEW	Southwest
STATUS	Vacant
DESCRIPTION	Creative office, private balcony, atrium & southwest views