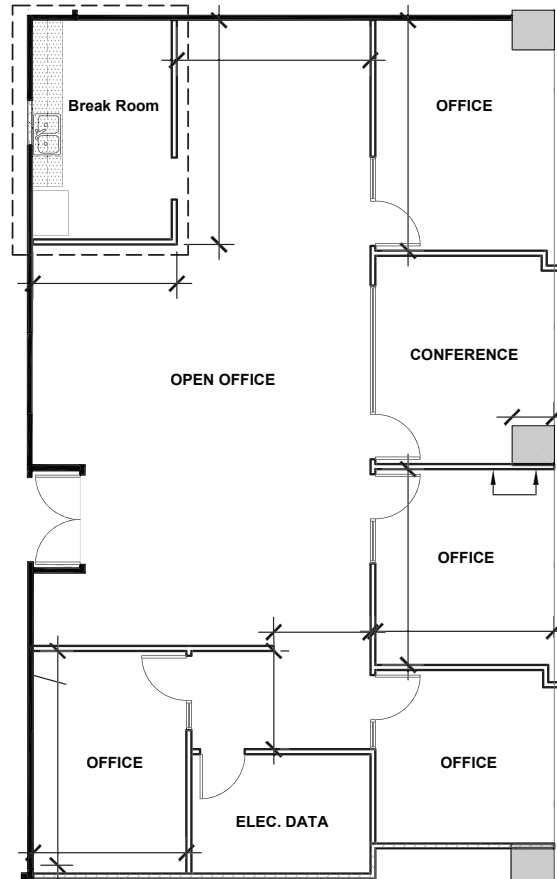


# 1 COLUMBIA PLACE

## SUITE 1840

401 WEST A STREET SAN DIEGO CA 92101  
 LANDMARK DOWNTOWN  
 CLASS A OFFICE BUILDING  
 27 STORIES TOTALING 556,750 SF



Owned & professionally managed by:



EMMES Leasing  
 emmesleasing@eamc.com  
 619.515.3400

SUITE	1840
RSF	2,453
VIEW	East
STATUS	Vacant
DESCRIPTION	