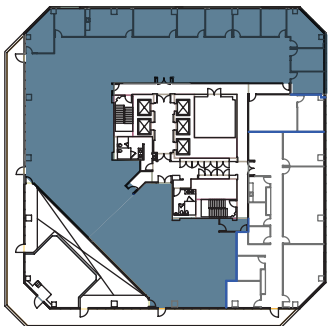
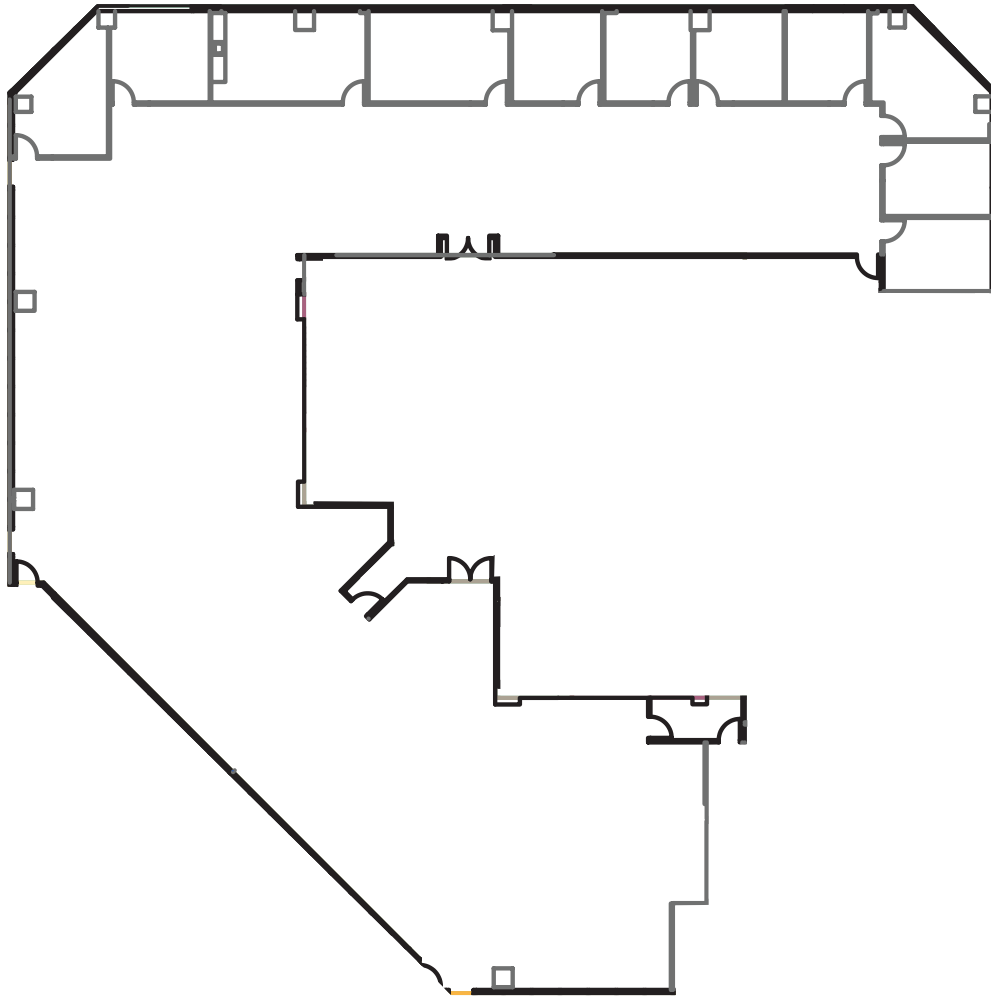


1 COLUMBIA PLACE

SUITES 700

401 WEST A STREET SAN DIEGO CA 92101
 LANDMARK DOWNTOWN
 CLASS A OFFICE BUILDING
 27 STORIES TOTALING 556,750 SF



SUITE	700
RSF	12,469
VIEW	Northwest/South
STATUS	Vacant
NOTES	Divisible to ±5,000



For additional information:

Richard Gonor
 858.410.1243
 richard.gonor@am.jll.com

Bess Wakeman
 858.410.1245
 bess.wakeman@am.jll.com

Brandt Riedman
 858.410.1247
 brandt.riedman@am.jll.com

Owned & professionally managed by:

