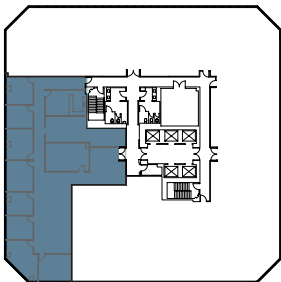
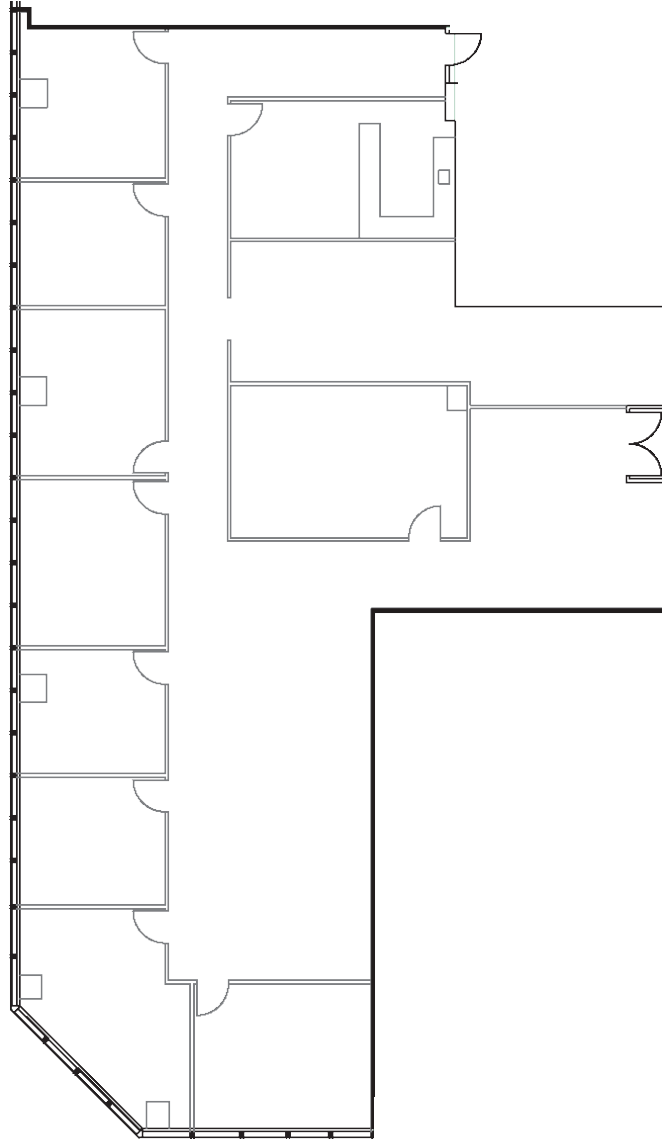


# 1 COLUMBIA PLACE

## SUITES 1800

401 WEST A STREET SAN DIEGO CA 92101  
 LANDMARK DOWNTOWN  
 CLASS A OFFICE BUILDING  
 27 STORIES TOTALING 556,750 SF



SUITE	1800
RSF	5,397
VIEW	West
STATUS	Avail. 6/1/19



For additional information:

Richard Gonor  
 858.410.1243  
 richard.gonor@am.jll.com

Bess Wakeman  
 858.410.1245  
 bess.wakeman@am.jll.com

Brandt Riedman  
 858.410.1247  
 brandt.riedman@am.jll.com

Owned & professionally managed by:

