

# 1 COLUMBIA PLACE

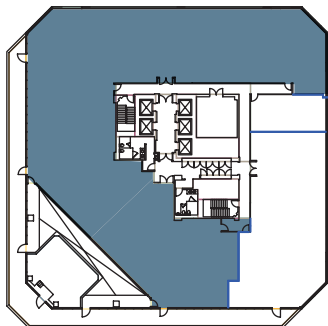
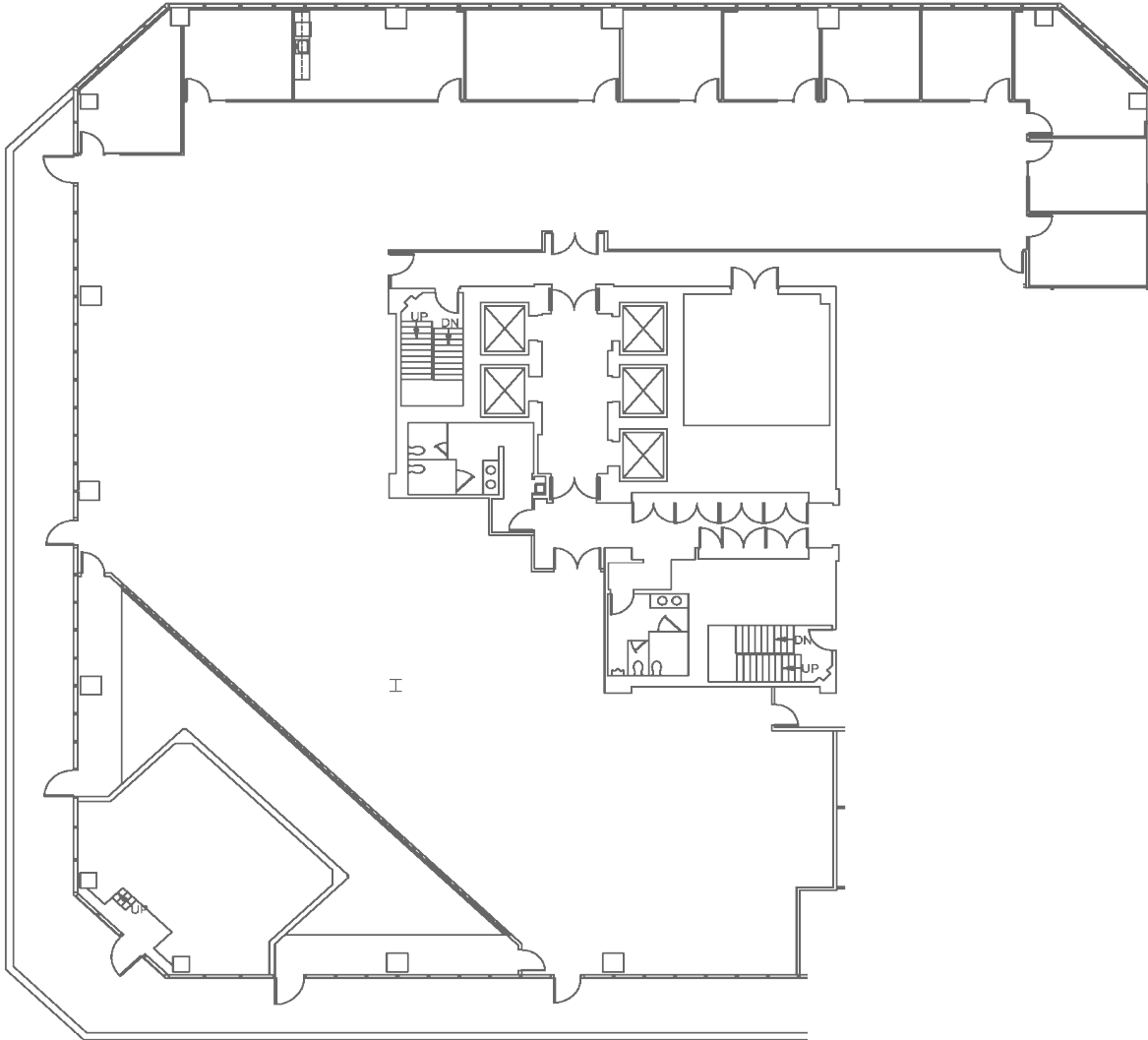
401 WEST A STREET SAN DIEGO CA 92101

LANDMARK DOWNTOWN

CLASS A OFFICE BUILDING

27 STORIES TOTALING 556,750 SF

## SUITE 700



|        |                     |
|--------|---------------------|
| SUITE  | 700                 |
| RSF    | 12,469              |
| VIEW   | Northwest/South     |
| STATUS | Avail. 5/1/19       |
| NOTES  | Divisible to ±5,000 |



For additional information:

Richard Gonor  
858.410.1243  
richard.gonor@am.jll.com

Bess Wakeman  
858.410.1245  
bess.wakeman@am.jll.com

Brandt Riedman  
858.410.1247  
brandt.riedman@am.jll.com

Owned & professionally managed by:

